

BG-Clean™ 634

The Asphalt Remover

Product Description

BG-Clean™ 634 is an industrial cleaner specifically designed for cleaning asphalt and heavy oil/tar from trucks and equipment used in the mixing and laying of asphalt. It works quickly to dissolve and soften these materials from low porosity surfaces such as metals and plastics. The product is simple to use and apply and does not contain any hazardous or undesirable ingredients.

BG-Clean™ 634 is an innovative blend of user-safe solvents that combine to create unmatched cleaning power for cleaning asphalt and road tar.

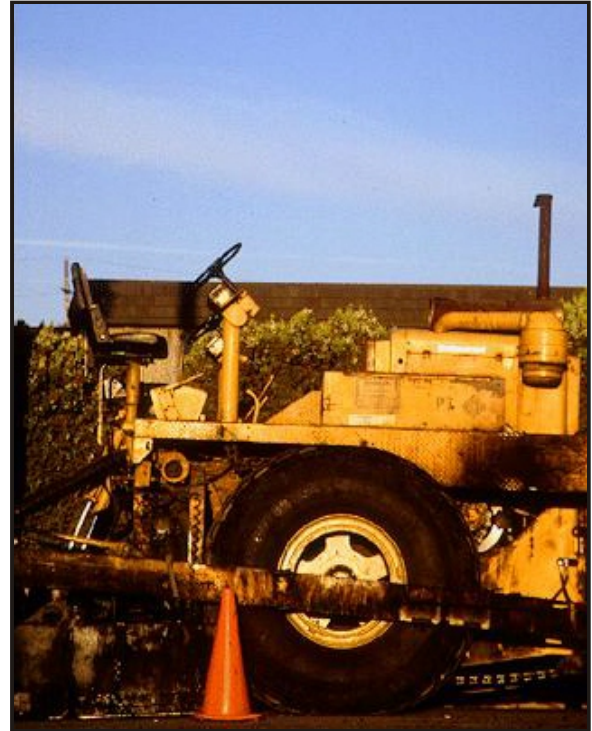
BG-Clean™ 634 offers significant advantages compared to other cleaners including:

- ✓ BG-Clean™ 634 works quickly to dissolve asphalts (1 to 5 minutes) and can easily be applied by hand or garden type sprayer.
- ✓ BG-Clean™ 634 is effective in both hot and cold working conditions.
- ✓ Surfaces treated with BG-Clean™ 634 will rinse clean with water alone.
- ✓ BG-Clean™ 634 is not a petroleum distillates based product.
- ✓ BG-Clean™ 634 is safe to store, handle, and use and is 100% rapidly biodegradable.
- ✓ BG-Clean™ 634 can be diluted up to 50% with water.

Technical Data

Chemical Type: Aqueous Surfactant Mixture
Solubility in Water: Complete
Oil Emulsifying Capability: Medium
Oil Dispersant Capability: Not Applicable
Dilution Rate: 50% to Full Strength
Penetration: High

Flash Point: >140F
Boiling Point: >300F
Odor: Mild Lemon Like
pH: Not Applicable
Biodegradability: 100%
HMIS (Safety): 1-1-0-B



Product Application

BG-Clean™ 634 should be applied at full strength or diluted up to 50% with water depending on the usage situation. For heavier applications apply at full strength; for lighter applications apply in diluted form.

Allow BG-Clean™ 634 to penetrate for 1 to 5 minutes depending on the difficulty of the job. Next, wipe the area clean with a rag and rinse the surface with water (hot water will improve cleaning efficiency.) Repeat as necessary. Consult your representative for specific application questions.

Note: BG-Clean™ 634 should not be applied to asphalt surfaces since it actively works to dissolve them. Also, avoid prolonged contact with painted surfaces without rinsing.